



## LuK Service Info



# Release fork does not fit the release bearing

## Assembly problems in versions with flat cam profile

Manufacturer: Iveco

Models: Stralis I, II  
Euro Trakker I, II

Part no.: 643 3320 00  
643 3325 00

See parts catalogue for current assignment



Figure 1: Release fork with flat cam profile

In some cases, the release bearing cannot be fitted, or is very difficult to fit, in the LuK RepSets specified above. The cause of this complaint is the release fork having a cam profile that is unsuitable for these RepSets.

Assembly problems mainly occur with accessory release forks that feature a flat cam profile (Figure 1).

To ensure a smooth repair process, it is advisable to use an original release fork from the vehicle manufacturer. This is supplied with rounded cams (Figure 2) and can be assembled easily.

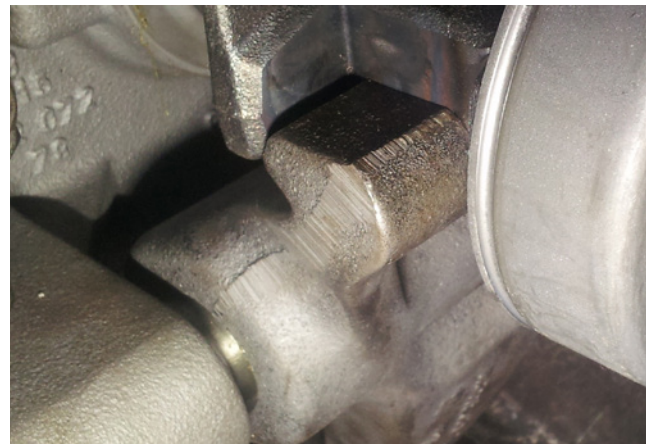


Figure 2: Release fork with rounded cam profile

Please observe the vehicle manufacturer specifications!

**You want more? We can help!**

Phone: +44 (0) 1432 264 264

Fax: +44 (0) 1432 375 760

aftermarket.uk@schaeffler.com

www.repexpert.co.uk

SCHAEFFLER  
**REP>XPERT**