

Installation Manual

AS-3061
ARNOTT FRONT LEFT AIR STRUT
MERCEDES-BENZ ML-CLASS (W/ ADS)(W-166)
MERCEDES-BENZ GL-CLASS (W/ ADS)(X-166)



Congratulations on your purchase of an Arnott® air suspension product. We at Arnott Incorporated are proud to offer a high quality product at the industry's most competitive pricing. Thank you for your confidence in us and our product.

Proper installation is essential to experience and appreciate the benefits of this system. Please take a moment to review these installation instructions before you begin to install these components on your vehicle. The removal and installation of air suspension products should only be performed by a fully qualified, ASE Certified, professional.

It is equally important to be aware of all necessary safety measures while installing your new Air Suspension System. This includes proper lifting and immobilizing of the vehicle and isolation of any stored energy to prevent personal injury or property damage.

"Engineered to Ride, Built to Last™"



WARNING: *The air suspension system is under pressure (up to 10 bar, or 150 lbf/in). Verify pressure has been relieved and disconnect power to the air suspension system prior to disassembly. Do not allow dirt or grease to enter the system. Always wear standard hand, ear, and eye protection when servicing the air suspension system.*

Arnott® is committed to the quality of its products. If you have a question or problem with any Arnott product, please contact Arnott by calling **800-251-8993** during normal business hours or email techassistance@arnottinc.com. (In the EU please call +31 (0)73 7850 580 or email info@arnotteurope.com)

GENERAL INFORMATION:

Reading this manual signifies your agreement to the terms of the general release, waiver of liability, and hold harmless agreement, the full text of which is available at www.arnottinc.com.

- Not to be stored below 5°F (-15°C) and above 122°F (50°C).
- Avoid damage to air lines and cables.
- Removal and installation is only to be performed by fully qualified personnel.
- Use car manufacturer's diagnostic software.

CAUTION: *Damage to the vehicle and air suspension system can be incurred if work is carried out in a manner other than specified in the instructions or in a different sequence.*



To avoid the possibility of short circuits while working with electric components consult your owner's manual on how to disconnect your battery.



Consult your vehicle owner's manual, service manual, or car dealer for the correct jacking points on your vehicle and for additional care, safety and maintenance instructions. Under no circumstances should any work be completed underneath the vehicle if it is not adequately supported, as serious injuries and death can occur.

AIR STRUT REMOVAL

1. SET STEERING TO STRAIGHT AHEAD.
2. RAISE VEHICLE.
3. REMOVE THE APPLICABLE FRONT WHEEL.
4. OPEN THE HOOD.
5. REMOVE THE RUBBER TRIM AS DEPICTED. (FIGURES 1, 2)

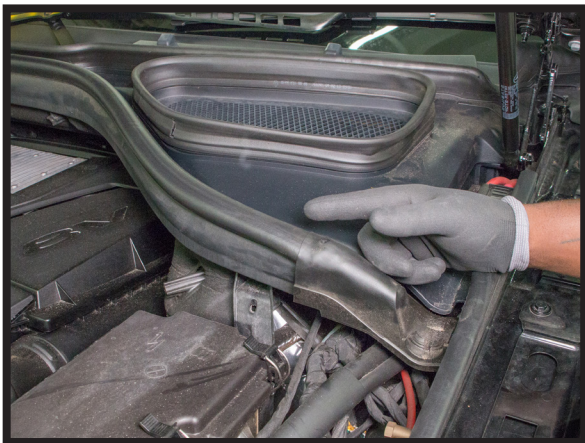


FIGURE 1



FIGURE 2

6. REMOVE THE HVAC AIR INTAKE COVER. (FIGURE 3)



FIGURE 3

7. UNCLIP THE HVAC AIR BOX. (FIGURE 4)



FIGURE 4

8. REMOVE THE HVAC AIR BOX. (FIGURE 5)



FIGURE 5

9. DISCONNECT THE AIR LINE FROM THE STRUT ASSEMBLY. (FIGURE 6)



FIGURE 6

10. REMOVE THE THREE TOP STRUT MOUNT NUTS. (FIGURE 7)

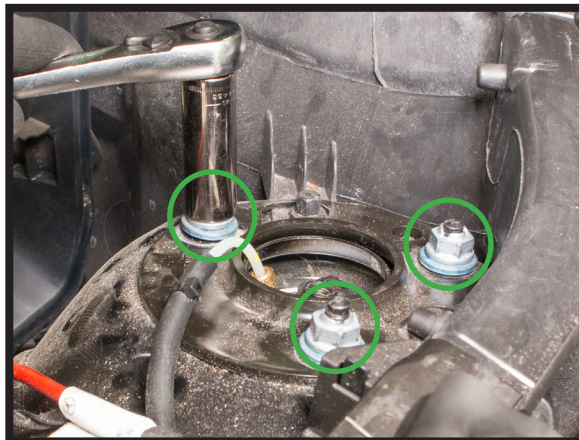


FIGURE 7

11. DISCONNECT THE DAMPING COIL. (FIGURE 8)



FIGURE 8

12. DISCONNECT THE WHEEL SPEED SENSOR. (FIGURE 9)



FIGURE 9

14. REMOVE THE WIRE ROUTING HARNESS FROM THE STRUT BODY. (FIGURE 10)



FIGURE 10

15. LOOSEN AND REMOVE THE AXLE NUT AND SEPERATE THE AXLE FROM THE WHEEL HUB.
(FIGURES 11, 12)

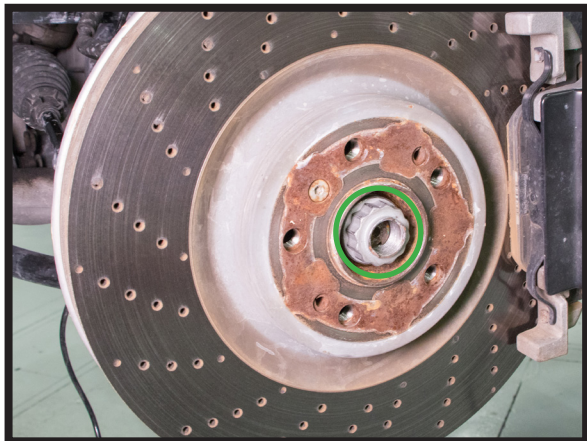


FIGURE 11



FIGURE 12

16. REMOVE THE SWAY BAR END LINK NUT. (FIGURE 13)

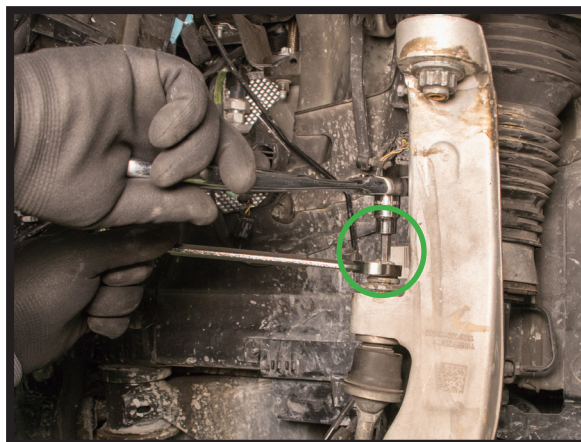


FIGURE 13

17. REMOVE THE CONTROL ARM NUT AND SEPERATE THE UPPER CONTROL ARM FROM THE SPINDLE ASSEMBLY. (FIGURE 14)



FIGURE 14

18. PULL DOWN ON THE SWAY BAR TO SEPERATE THE SWAY BAR END LINK FROM THE SPINDLE ASSEMBLY. (FIGURE 15)

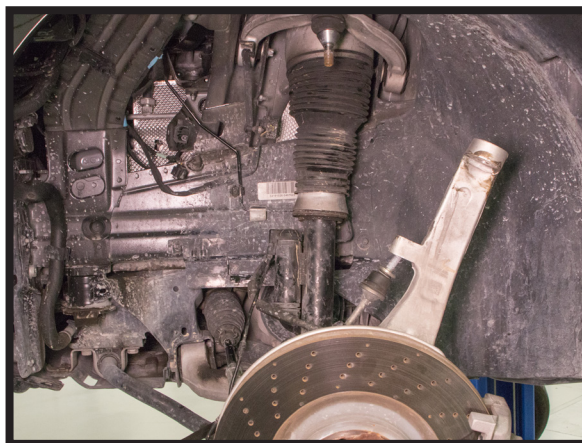


FIGURE 15

19. REMOVE THE BOTTOM STRUT MOUNTING BOLT. (FIGURE 16)



FIGURE 16

20. REMOVE THE AXLE FROM THE WHEEL HUB. (FIGURE 17)



FIGURE 17

21. CAREFULLY REMOVE THE STRUT ASSEMBLY. (FIGURE 18)



FIGURE 18

22. REMOVAL COMPLETE.

AIR STRUT INSTALLATION



Tighten all nuts and bolts to manufacturer's specifications during the installation process.



Do not remove the air fitting from the air strut. Doing so may cause damage and/or void warranty. Remove the white shipping pin from the new air fitting and insert the air line until fully seated.

1. INSTALL THE STRUT INTO THE VEHICLE. (FIGURE 19)



FIGURE 19

2. INSERT THE AXLE INTO THE WHEEL HUB. (FIGURES 20, 21)



FIGURE 20



FIGURE 21

3. INSTALL THE BOTTOM NUT AND BOLT AND TIGHTEN TO MANUFACTURER'S SPECIFICATIONS. (FIGURES 22, 23)



FIGURE 22



FIGURE 23

4. REATTACH THE SWAY BAR END LINK TO THE CONTROL ARM AND REINSTALL THE SWAY BAR END LINK NUT. TIGHTEN TO MANUFACTURER'S SPECIFICATIONS. (FIGURES 24, 25)

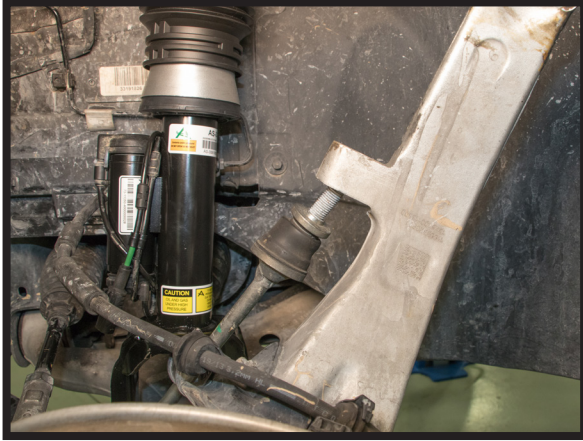


FIGURE 24



FIGURE 25

5. REINSTALL THE CONTROL ARM NUT. (FIGURE 26)



FIGURE 26

6. REATTACH THE AXLE TO THE WHEEL HUB AND REINSTALL THE AXLE NUT. (FIGURE 27)



FIGURE 27

7. REATTACH THE WIRE ROUTING HARNESS. (FIGURE 28)



FIGURE 28

8. REROUTE THE ELECTRICAL WIRES INTO THE WIRE HARNESS. (FIGURE 29)



FIGURE 29

9. RECONNECT THE WHEEL SPEED SENSOR. (FIGURE 30)

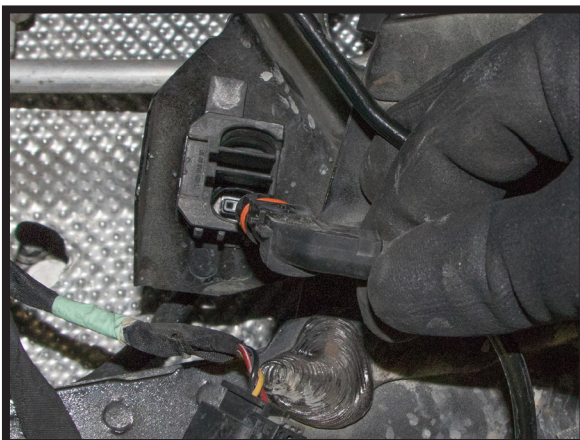


FIGURE 30

10. RECONNECT THE DAMPING COIL. (FIGURE 31)



FIGURE 31

11. INSTALL THE THREE TOP SHOCK MOUNT NUTS. (FIGURE 32)

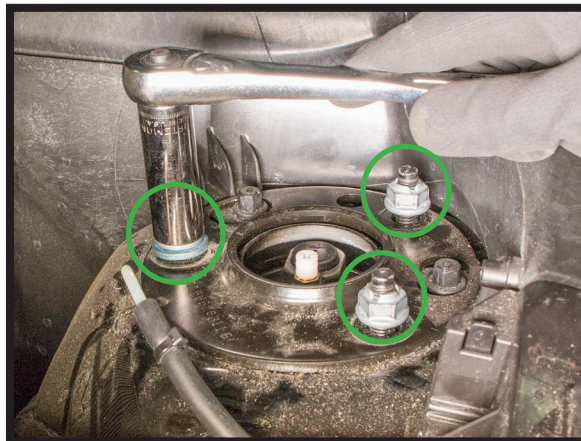


FIGURE 32

12. REINSTALL THE AIR LINE. SEE PROVIDED TSB. (FIGURE 33)



FIGURE 33

13. REINSTALL THE HVAC AIR BOX AND RECLIP.
14. REINSTALL THE HVAC AIR INTAKE COVER.
15. REINSTALL THE WIPER COWL AND SEAL.
16. CLOSE THE HOOD.
17. REINSTALL THE WHEEL.
18. INSTALLATION COMPLETE.