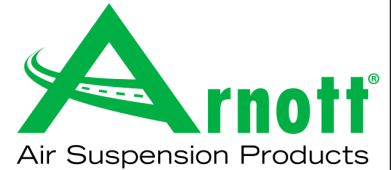


Installation Manual

**C-3419
ARNOTT
NEW COIL SPRING CONVERSION KIT
2004-2010 VW TOUAREG (7L)
2007-2015 AUDI Q7 (4L) - SUV'S**



Congratulations on your purchase of an Arnott® air suspension product. We at Arnott Incorporated are proud to offer a high quality product at the industry's most competitive pricing. Thank you for your confidence in us and our product.

Proper installation is essential to experience and appreciate the benefits of this system. Please take a moment to review these installation instructions before you begin to install these components on your vehicle. The removal and installation of air suspension products should only be performed by a fully qualified, ASE Certified, professional.

It is equally important to be aware of all necessary safety measures while installing your new Air Suspension System. This includes proper lifting and immobilizing of the vehicle and isolation of any stored energy to prevent personal injury or property damage.

"Engineered to Ride, Built to Last®"



WARNING: *The air suspension system is under pressure (up to 10 bar, or 150 lbf/in). Verify pressure has been relieved and disconnect power to the air suspension system prior to disassembly. Do not allow dirt or grease to enter the system. Always wear standard hand, ear, and eye protection when servicing the air suspension system.*

Arnott® is committed to the quality of its products. If you have a question or problem with any Arnott product, please contact Arnott by calling **800-251-8993** during normal business hours or email techassistance@arnottinc.com. (In the EU please call +31 (0)73 7850 580 or email info@arnotteurope.com)

GENERAL INFORMATION:

Reading this manual signifies your agreement to the terms of the general release, waiver of liability, and hold harmless agreement, the full text of which is available at www.arnottinc.com.

- Not to be stored below 5°F (-15°C) or above 122°F (50°C).
- Avoid damage to air lines and cables.
- Removal and installation is only to be performed by fully qualified personnel.
- Use car manufacturer's diagnostic software.

CAUTION: *Damage to the vehicle and air suspension system can be incurred if work is carried out in a manner other than specified in the instructions or in a different sequence.*



To avoid the possibility of short circuits while working with electric components consult your owner's manual on how to disconnect your battery.



Consult your vehicle owner's manual, service manual, or car dealer for the correct jacking points on your vehicle and for additional care, safety and maintenance instructions. Under no circumstances should any work be completed underneath the vehicle if it is not adequately supported, as serious injuries and death can occur.

FRONT AIR STRUT REMOVAL

1. RAISE VEHICLE.
2. REMOVE FRONT WHEELS.
3. DISCONNECT ELECTRICAL CONNECTION. (FIGURE 1)



FIGURE 1

4. DISCONNECT AIR LINE. (FIGURE 2)



FIGURE 2

5. DISCONNECT SWAY BAR LINK. (FIGURES 3, 4)



FIGURE 3

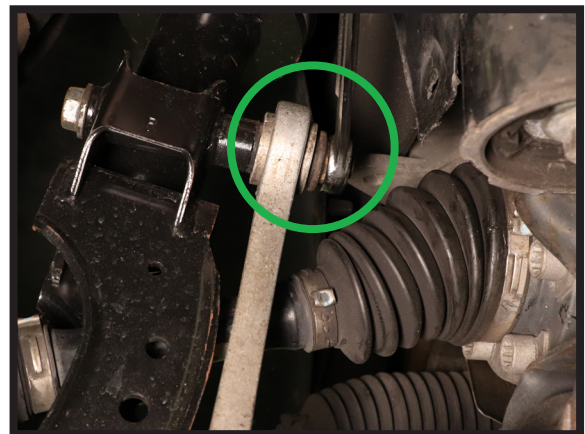


FIGURE 4

6. LOOSEN LOWER STRUT MOUNT BOLT. DO NOT REMOVE AT THIS TIME. (FIGURE 5)

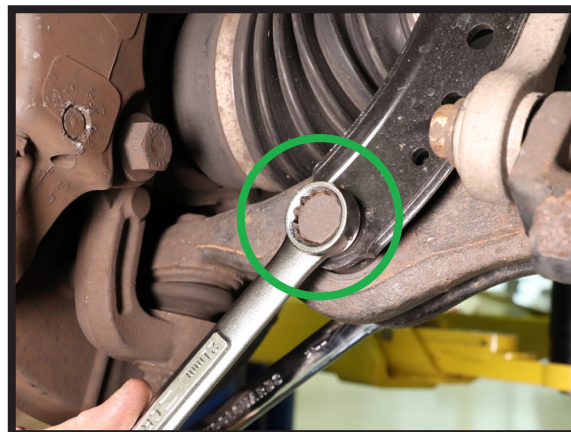


FIGURE 5

7. REMOVE THE THREE (3) TOP MOUNT BOLTS. (FIGURES 6, 7, 8)

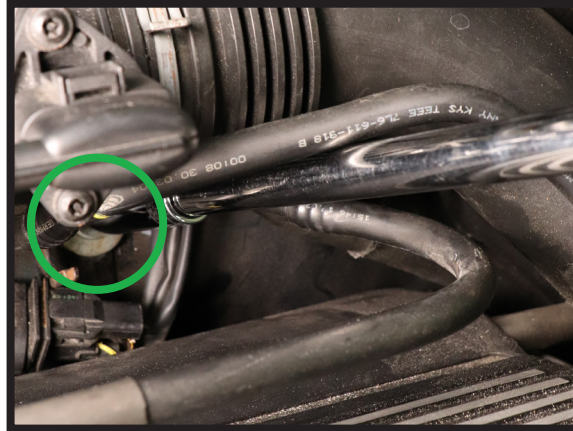


FIGURE 6



FIGURE 7



FIGURE 8

8. DISCONNECT UPPER WISHBONE FROM SPINDLE. (FIGURES 9, 10)

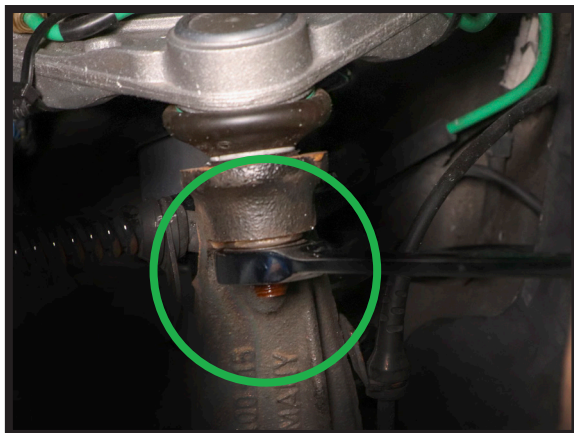


FIGURE 9



FIGURE 10

9. REMOVE LOWER STRUT MOUNT BOLT AND REMOVE AIR STRUT FROM VEHICLE. (FIGURES 11, 12)



FIGURE 11



FIGURE 12

10. REMOVE AIR STRUT.

FRONT COIL SPRING INSTALLATION



Tighten all nuts and bolts to manufacturer's specifications during the installation process.

NOTE:

CHECK VALVE FROM OLD AIR STRUT MUST BE REMOVED TO ENSURE ALL AIR IS REMOVED FROM THE STRUT PRIOR TO REMOVING UPPER WISHBONE AND PLACING IT ON THE COIL SPRING.

1. REMOVE CHECK VALVE FROM AIR STRUT. DISCONNECT AND REMOVE WISHBONE MOUNT FROM UPPER STRUT MOUNT. (FIGURES 13, 14)

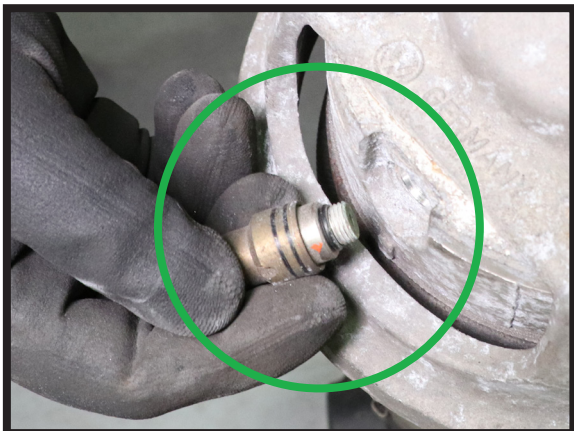


FIGURE 13



FIGURE 14

2. INSTALL THE WISHBONE MOUNT TO THE UPPER MOUNT OF THE COIL SPRING. TIGHTEN TO MANUFACTURER'S SPECIFICATIONS. (FIGURES 15, 16)



FIGURE 15



FIGURE 16

3. INSTALL ARNOTT COIL SPRING REPLACEMENT INTO VEHICLE. (FIGURE 17)



FIGURE 17

4. CONNECT SWAY BAR LINK. TIGHTEN TO MANUFACTURER'S SPECIFICATIONS. (FIGURES 18, 19)



FIGURE 18



FIGURE 19

5. INSTALL LOWER STRUT MOUNT BOLT. TIGHTEN TO MANUFACTURER'S SPECIFICATIONS. (FIGURE 20)

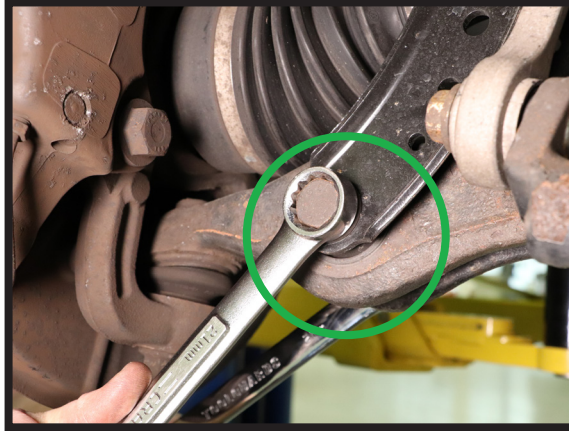


FIGURE 20

6. INSTALL THE THREE (3) TOP MOUNT BOLTS TIGHTEN TO MANUFACTURER'S SPECIFICATIONS. (FIGURES 21, 22, 23)

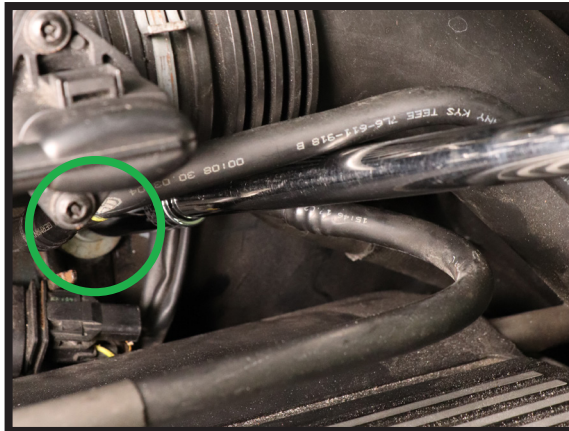


FIGURE 21

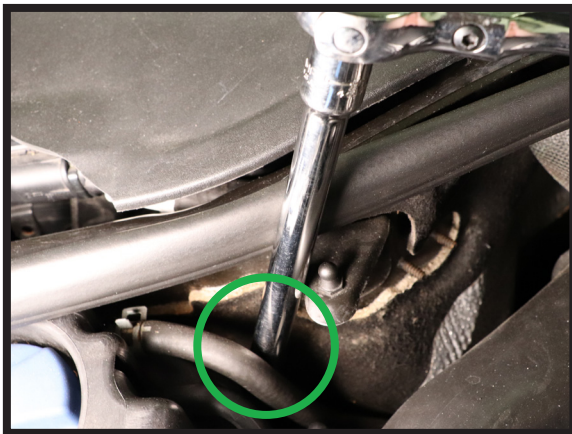


FIGURE 22



FIGURE 23

7. CONNECT SPINDLE TO UPPER WISHBONE MOUNT. TIGHTEN TO MANUFACTURER'S SPECIFICATIONS. (FIGURES 24, 25)



FIGURE 24

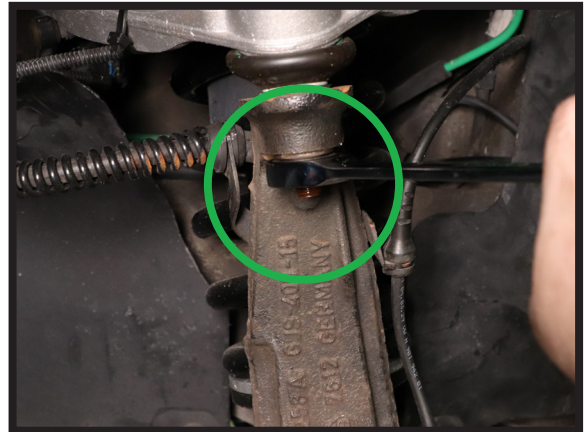


FIGURE 25

8. USE ZIPTIES TO SECURE THE UNUSED ELECTRICAL CONNECTION AND AIR LINE IN AN APPROPRIATE LOCATION FREE FROM FRICTION AND MOVEMENT. (FIGURES 26, 27)



FIGURE 26

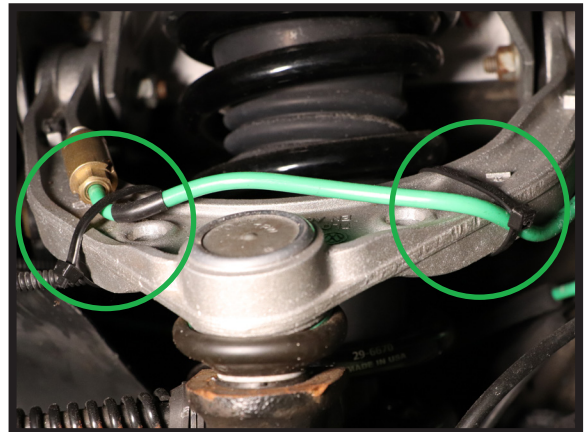


FIGURE 27

9. REINSTALL FRONT WHEELS.

REAR AIR STRUT REMOVAL

1. LIFT VEHICLE AND REMOVE REAR WHEELS.
2. DISCONNECT ELECTRICAL CONNECTION. (FIGURE 28)



FIGURE 28

3. DISCONNECT THE AIR LINE. (FIGURE 29)

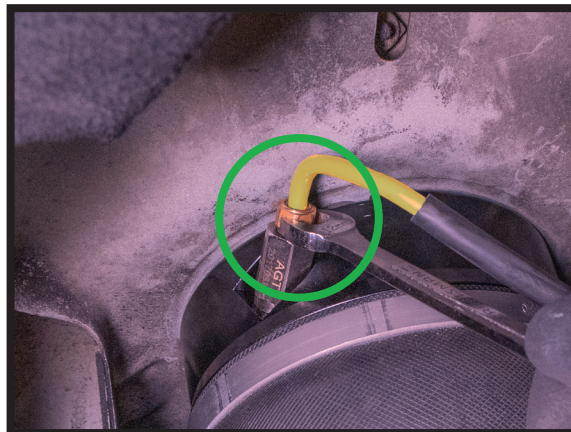


FIGURE 29

4. REMOVE TOP MOUNT BOLTS. (FIGURES 30, 31)



FIGURE 30



FIGURE 31

5. REMOVE LOWER STRUT MOUNT BOLT AND REMOVE STRUT FROM VEHICLE. (FIGURES 32, 33)



FIGURE 32



FIGURE 33

REAR COIL SPRING INSTALLATION



Tighten all nuts and bolts to manufacturer's specifications during the installation process.

NOTE:

CHECK VALVE FROM OLD AIR STRUT MUST BE REMOVED TO ENSURE ALL AIR IS REMOVED FROM THE STRUT PRIOR TO REMOVING TOP MOUNT.

1. REMOVE CHECK VALVE FROM AIR STRUT. DISCONNECT AND REMOVE STRUT FROM UPPER STRUT MOUNT. (FIGURES 34, 35)

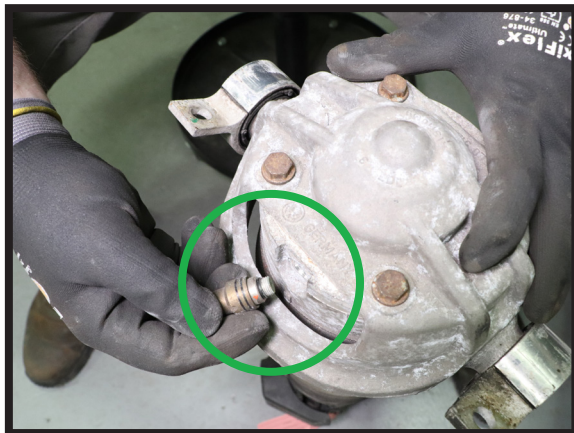


FIGURE 34



FIGURE 35

2. INSTALL STRUT MOUNT ON TO COIL SPRING. TIGHTEN TO MANUFACTURER'S SPECIFICATIONS. (FIGURE 36)



FIGURE 36

3. INSTALL COIL SPRING INTO VEHICLE. (FIGURE 37)

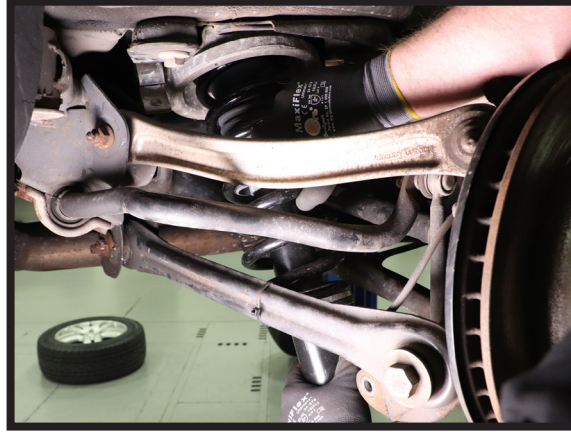


FIGURE 37

4. INSTALL TOP MOUNTING BOLTS USING THE ARNOTT PROVIDED BOLTS. TIGHTEN TO MANUFACTURER'S SPECIFICATIONS. (FIGURES 38, 39)



FIGURE 38

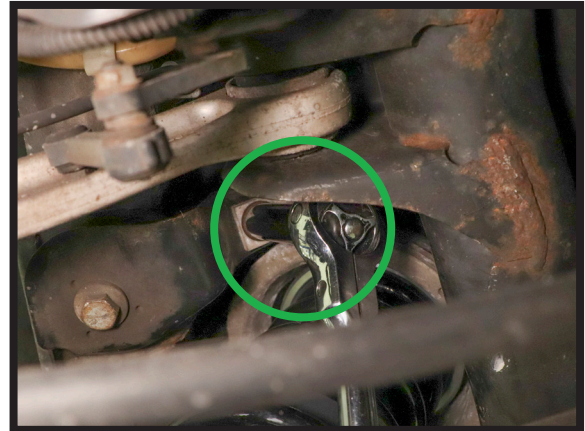


FIGURE 39

5. REINSTALL BOTTOM STRUT MOUNT BOLT. TIGHTEN TO MANUFACTURER'S SPECIFICATIONS. (FIGURE 40)

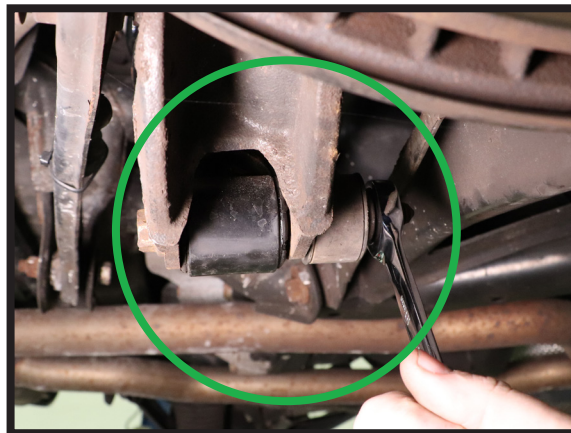


FIGURE 40

6. USE ZIP TIES TO SECURE AIR LINE AND ELECTRICAL CONNECTION IN APPROPRIATE LOCATION FREE FROM FRICTION OR MOVEMENT. (FIGURE 41)



FIGURE 41

7. REINSTALL REAR WHEELS.

ELECTRONIC BYPASS MODULE INSTALLATION

1. REMOVE TRIM PANEL IN TRUNK OF VEHICLE. (FIGURES 42, 43)



FIGURE 42



FIGURE 43

2. DISCONNECT TWO (2) SUSPENSION MODULE HARNESSES. (FIGURES 44, 45)



FIGURE 44



FIGURE 45

3. INSTALL THE FIVE (5) CONNECTOR SPLICE TO MALE SPADE TERMINALS ONTO THE WIRE HARNESS USING THE DIAGRAM AND PHOTOS PROVIDED. (FIGURES 46, 47, 48, 49)

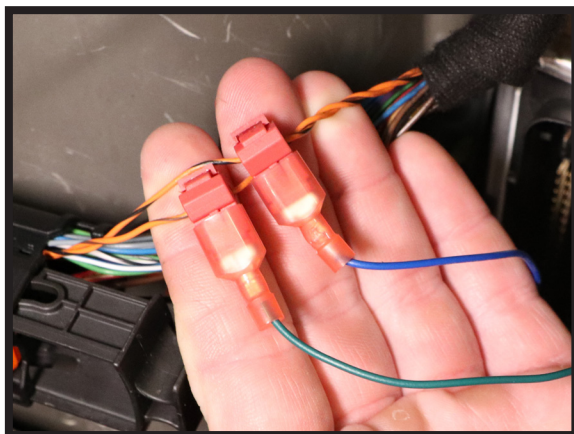


FIGURE 46

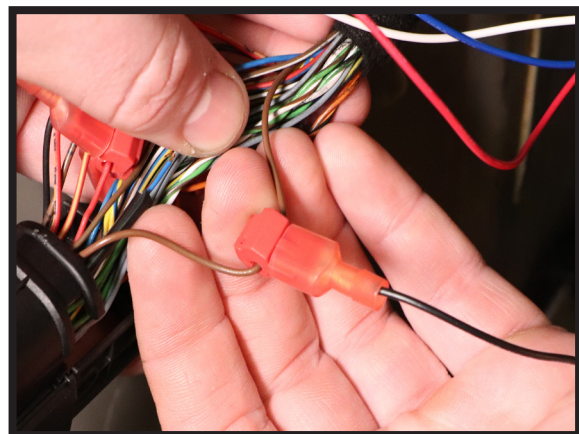


FIGURE 47

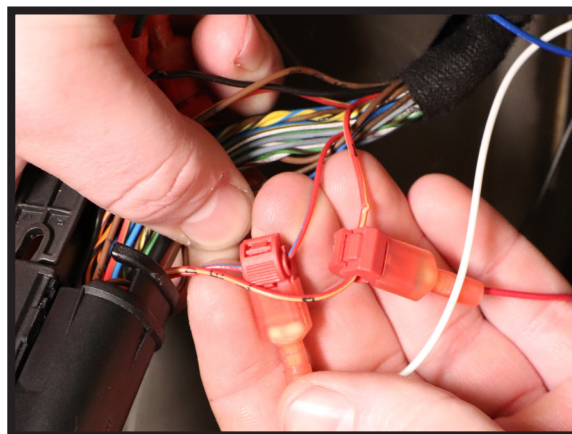


FIGURE 48

	FROM	TO	PIN LOCATION	
ARNOTT ELECTRONIC BYPASS MODULE	BLUE	ORANGE W/ BLACK STRIPE	61	VEHICLE LEVEL CONTROL 121 PIN WIRING HARNESS
	GREEN	ORANGE W/ BROWN STRIPE	81	
	WHITE	RED W/ BLUE STRIPE	25	
	RED	RED W/ YELLOW STRIPE	4 or 5	
	BLACK	LIGHT BROWN	1 or 2	

FIGURE 49

4. PLUG THE 10-PIN CONNECTOR TO THE ARNOTT EBM. (FIGURES 50, 51)



FIGURE 50

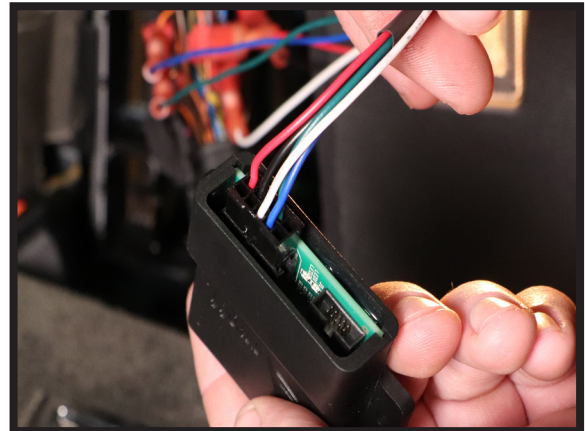


FIGURE 51

5. MOUNT THE CONNECTED EBM IN SUITABLE LOCATION.
6. DO NOT PLUG IN THE TWO SUSPENSION MODULE HARNESS CONNECTIONS.
7. REINSTALL TRIM PANEL.
8. INSTALLATION COMPLETE.